

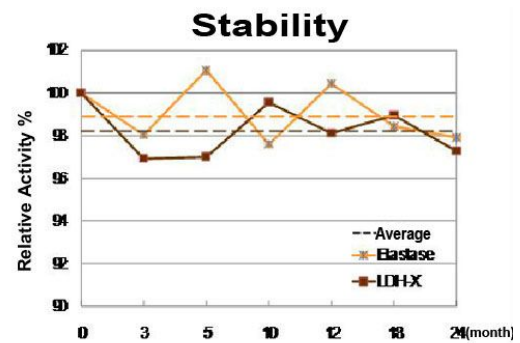
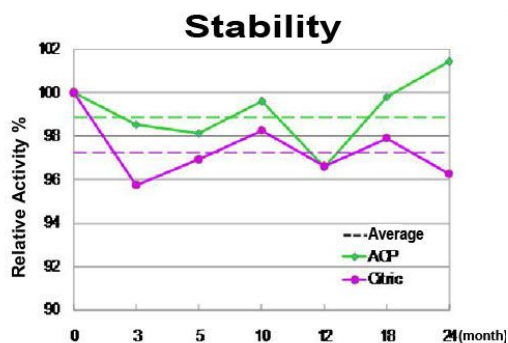
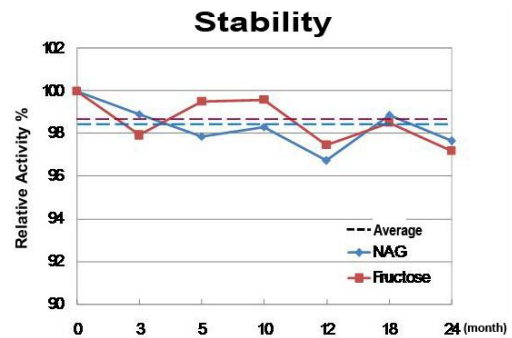
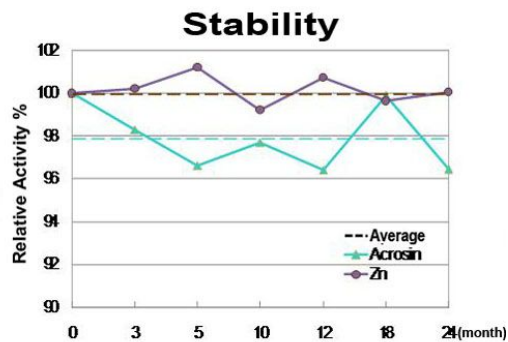


BRED Life Science

SemenAssay® ChemControl - Seminal Plasma Biochemical Compound Quality Control Product

Features:

- Initiative technology around the world.
- Ideal for andrology lab to do the internal quality control.
- The base of SemenAssay® ChemControl is made from the existed human seminal plasma.
- The applied tests for internal quality control are as follows (the values are set by the diagnostic kits and Chemwell BRED analyzer of BRED company). Elastase, Fructose, Acrosin, ACP, Zn, Citric, NAG, LDH-X.
- The SemenAssay® ChemControl is very stable with a period of validity of 18 months.





BRED Life Science

SemenAssay® Fructose - Kit for Determination of the Fructose Level in Seminal Plasma (Enzymic Method)

The kit is used for quantitative detection of fructose levels in human seminal plasma, in body fluid, food and other types of specimens.

Features:

- A new enzymic method for the quantitative detection of fructose is adopted, which is innovative around the world.
- Compared to conventional methods, it is safer with more sensitive and stable results.
- Operation in the microplates. Fast and easy-to-use.
- Available for automatic and semiautomatic tests, good for standardization of test.
- Shelf life up to one year
- 40 tests per kit and meet the need of batch testing.
- CE approved

